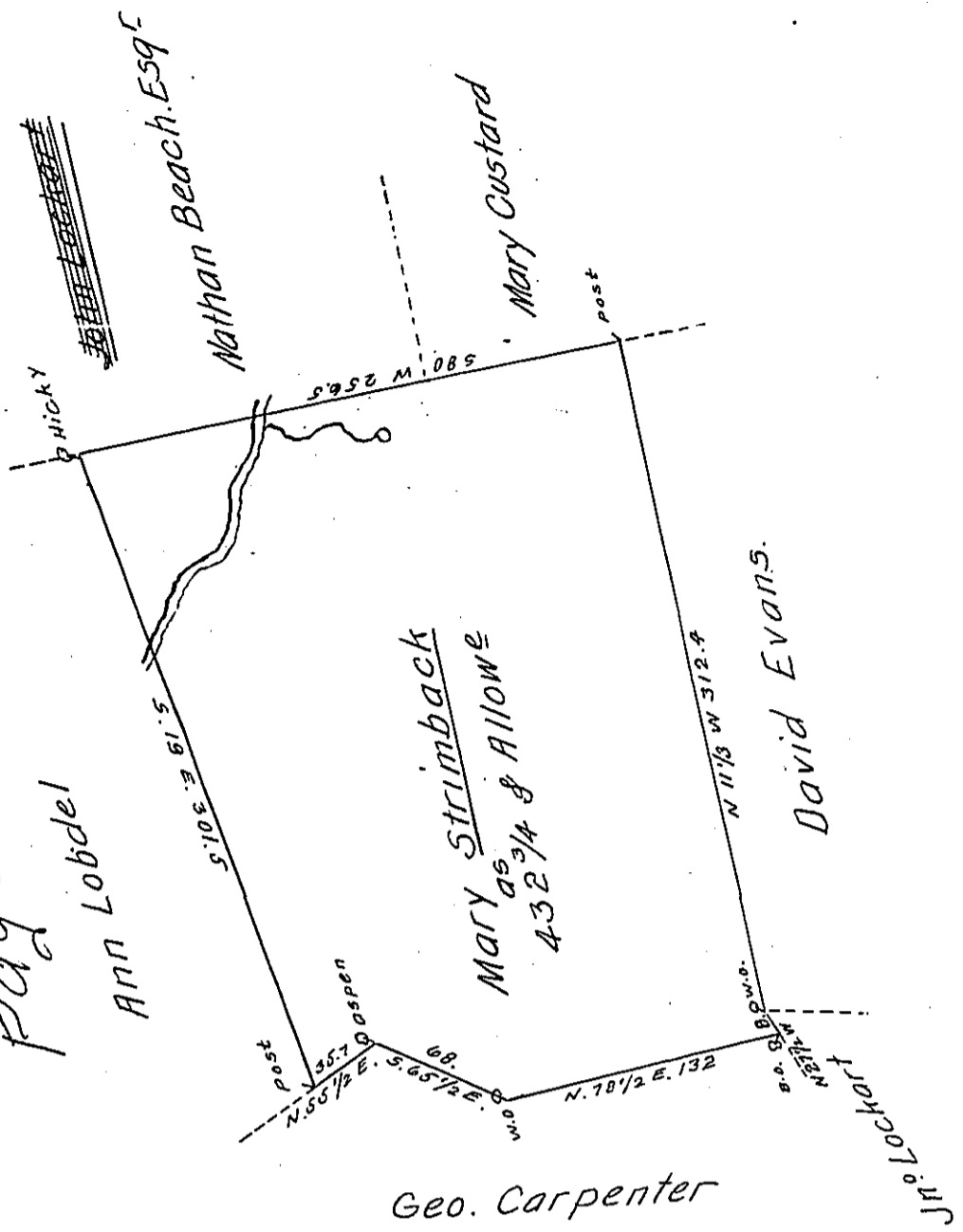


Page 443



A Draft of a tract of Land Called — ^{on Pond Creek} Situate in the County of Luzerne
 Containing four Hundred and thirty two Acres ^{3/4} Allow^e. Surveyed for
 Mary Strimback the 4th day of Nov^r 1793 by Virtue of a Warrant dated
 the 14th day of Jan^y 1793.

by W^m Gray D.S.

To Daniel Brodhead Esq^r }
 Surv^r Gen^l }

IN TESTIMONY that the above is a copy of the original remaining on file in
 the Department of Internal Affairs of Pennsylvania, made
 conformably to an Act of Assembly approved the 16th day of
 February, 1833, I have hereunto set my Hand and caused
 the Seal of said Department to be affixed at Harrisburg,
 this eighth day of August 1910.

Henry Horvath
 Secretary of Internal Affairs.